

**Seminario regionale SCIVAC – Moncalieri 16 giugno 2019**

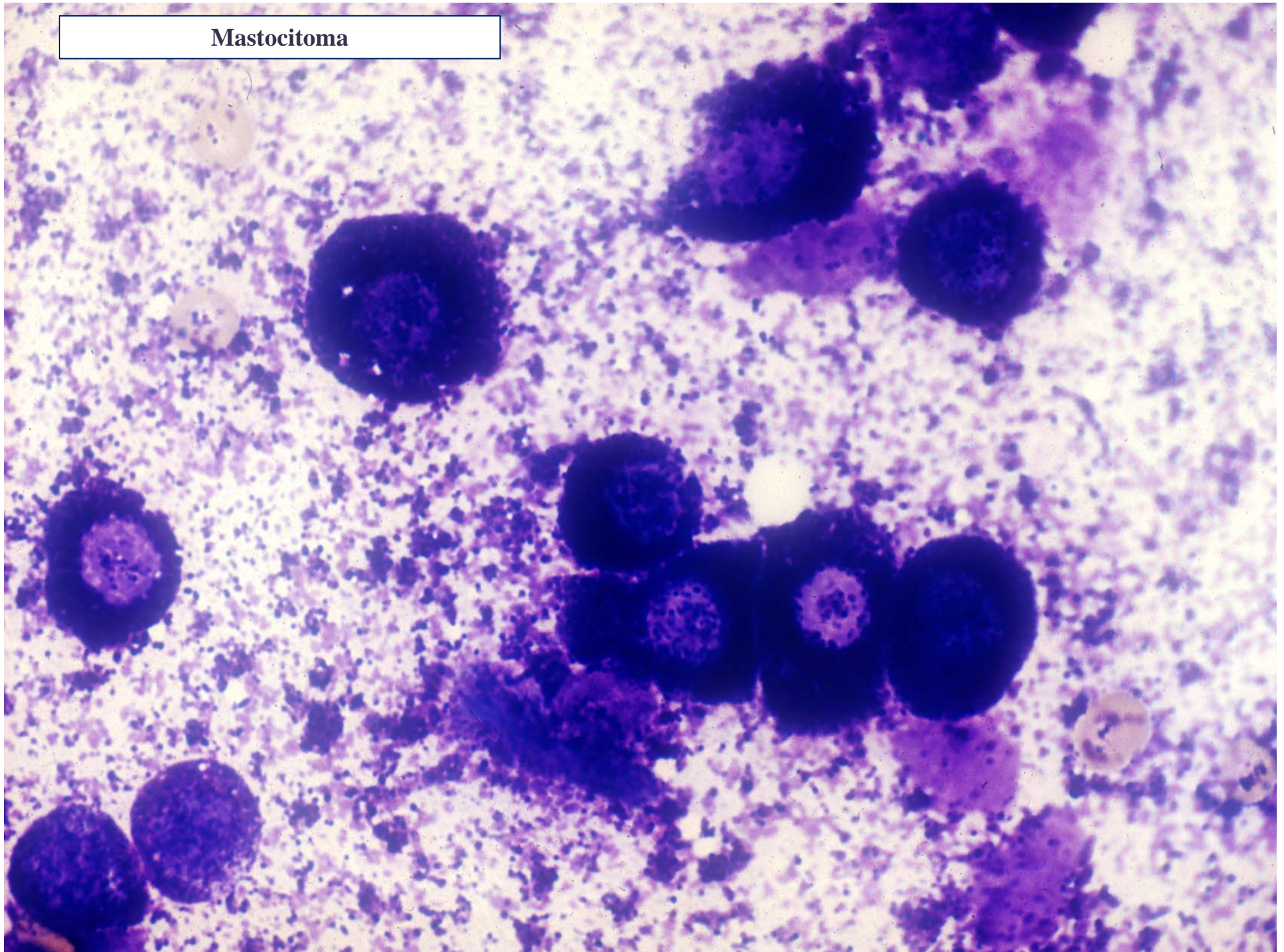
# **Casi clinici interattivi: lavoro in gruppo**

**Esercizi su quanto visto (e non) durante la giornata**



**Mario Caniatti DVM, Dipl ECVP - Dipartimento di Medicina Veterinaria (DiMeVet)**

Mastocitoma



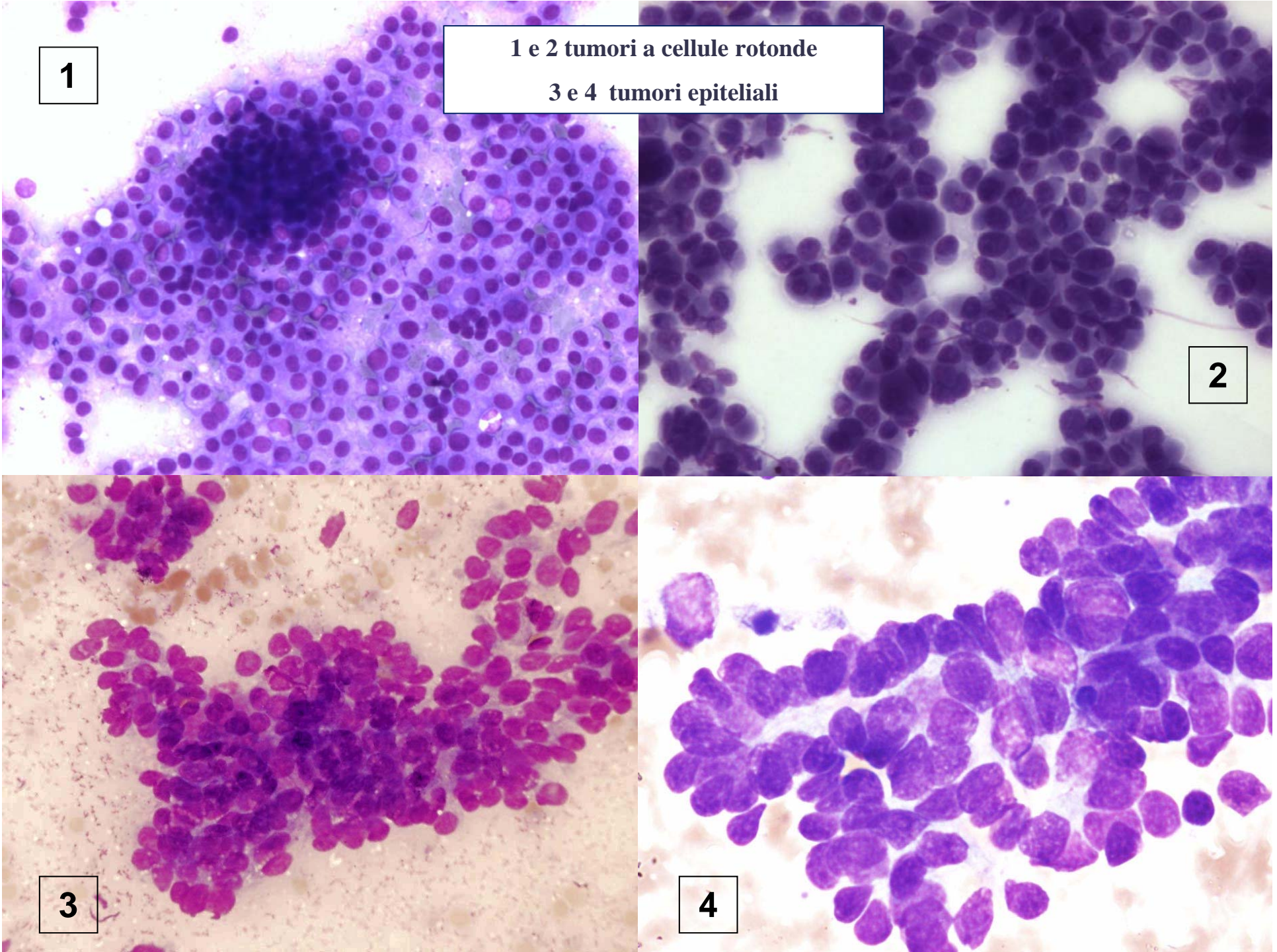
1

1 e 2 tumori a cellule rotonde  
3 e 4 tumori epiteliali

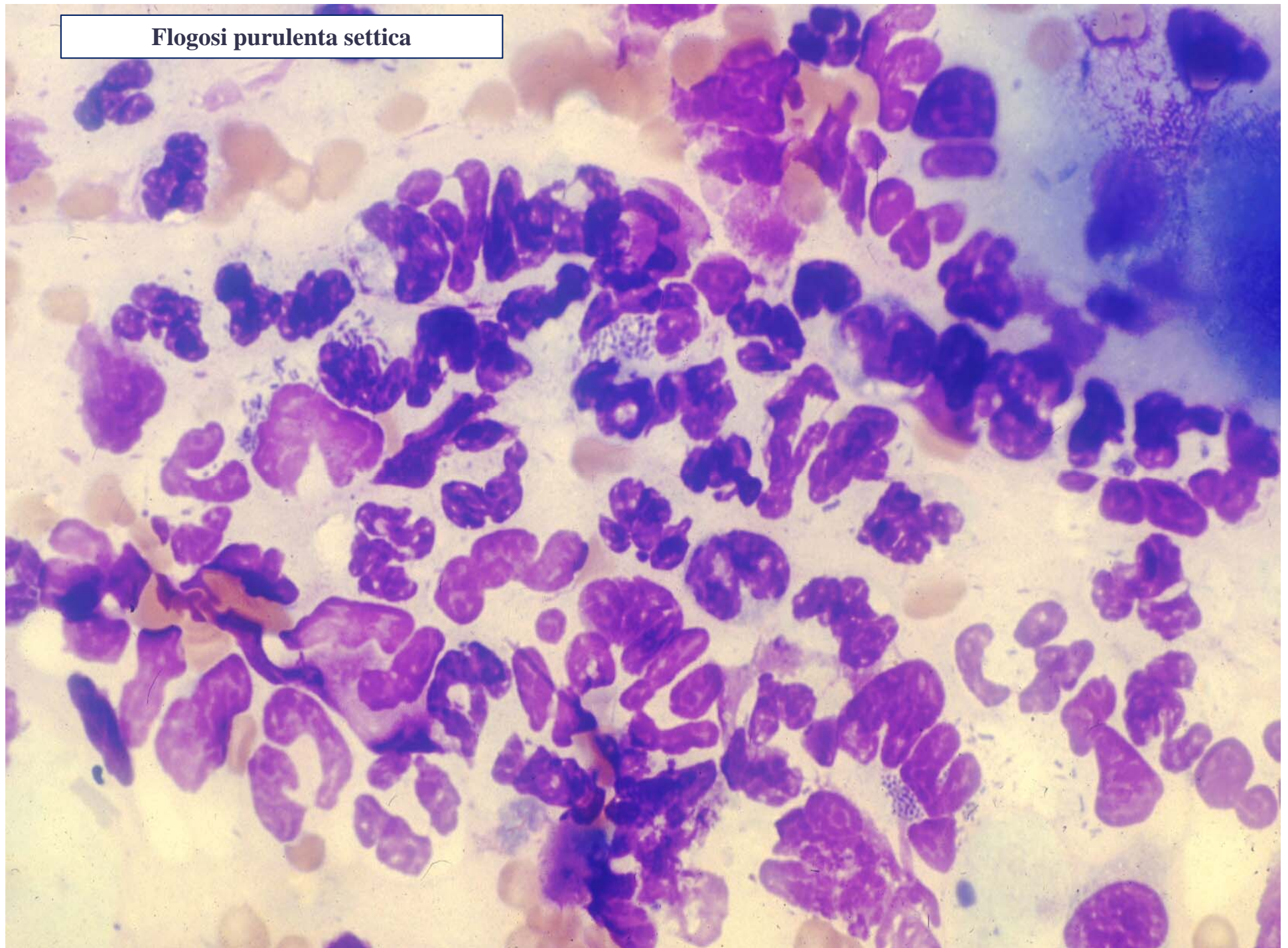
2

3

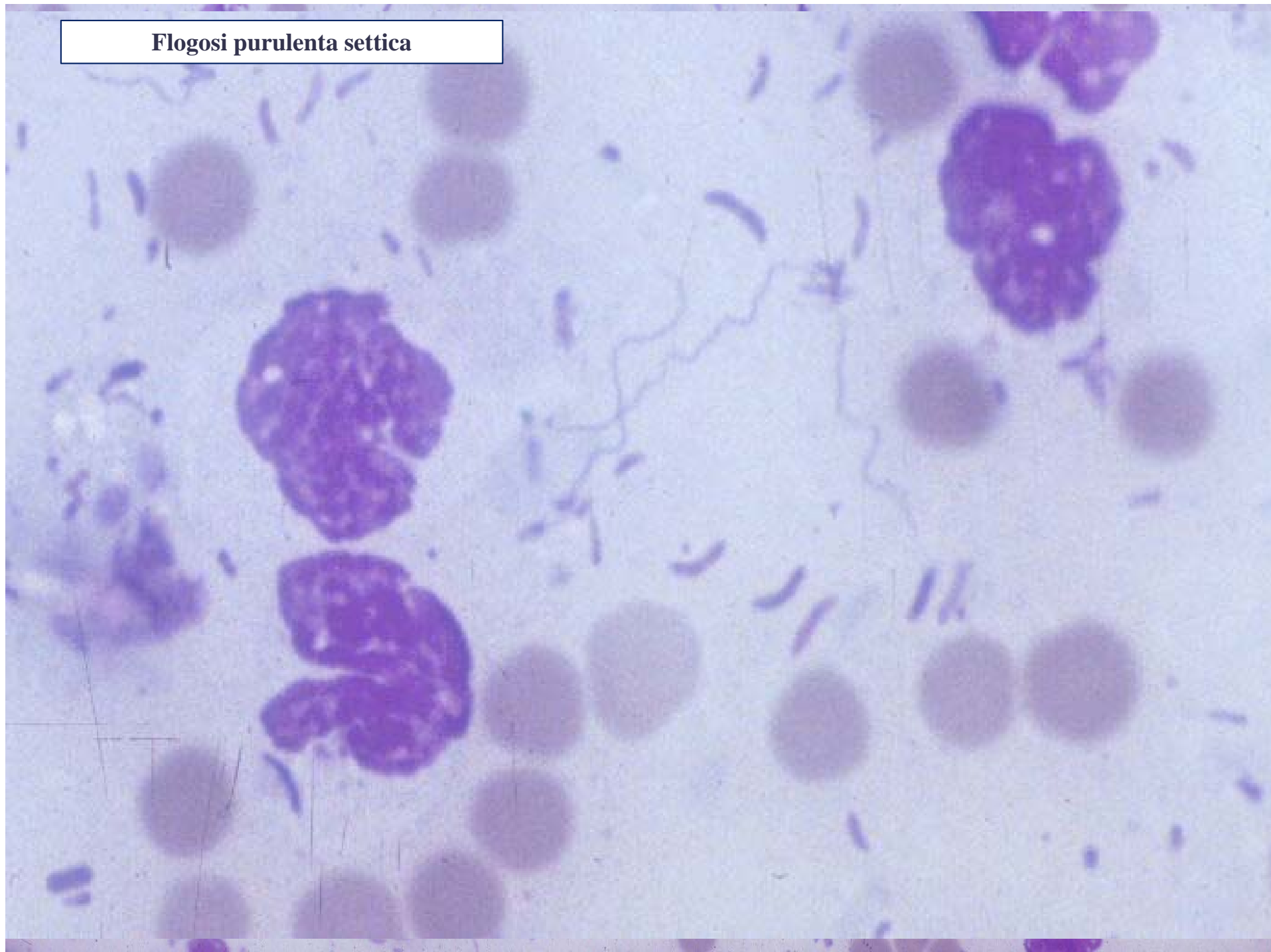
4



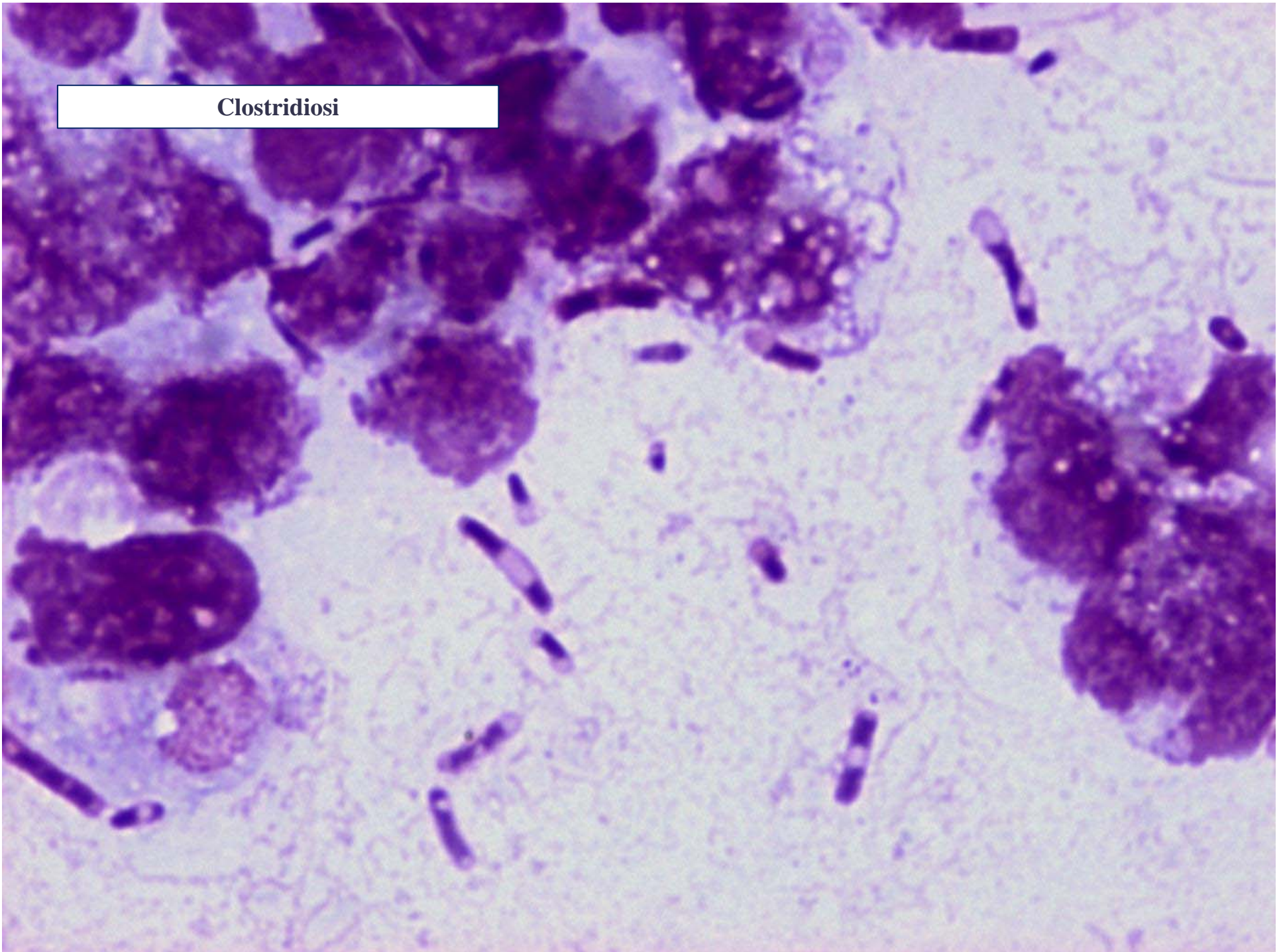
Flogosi purulenta settica



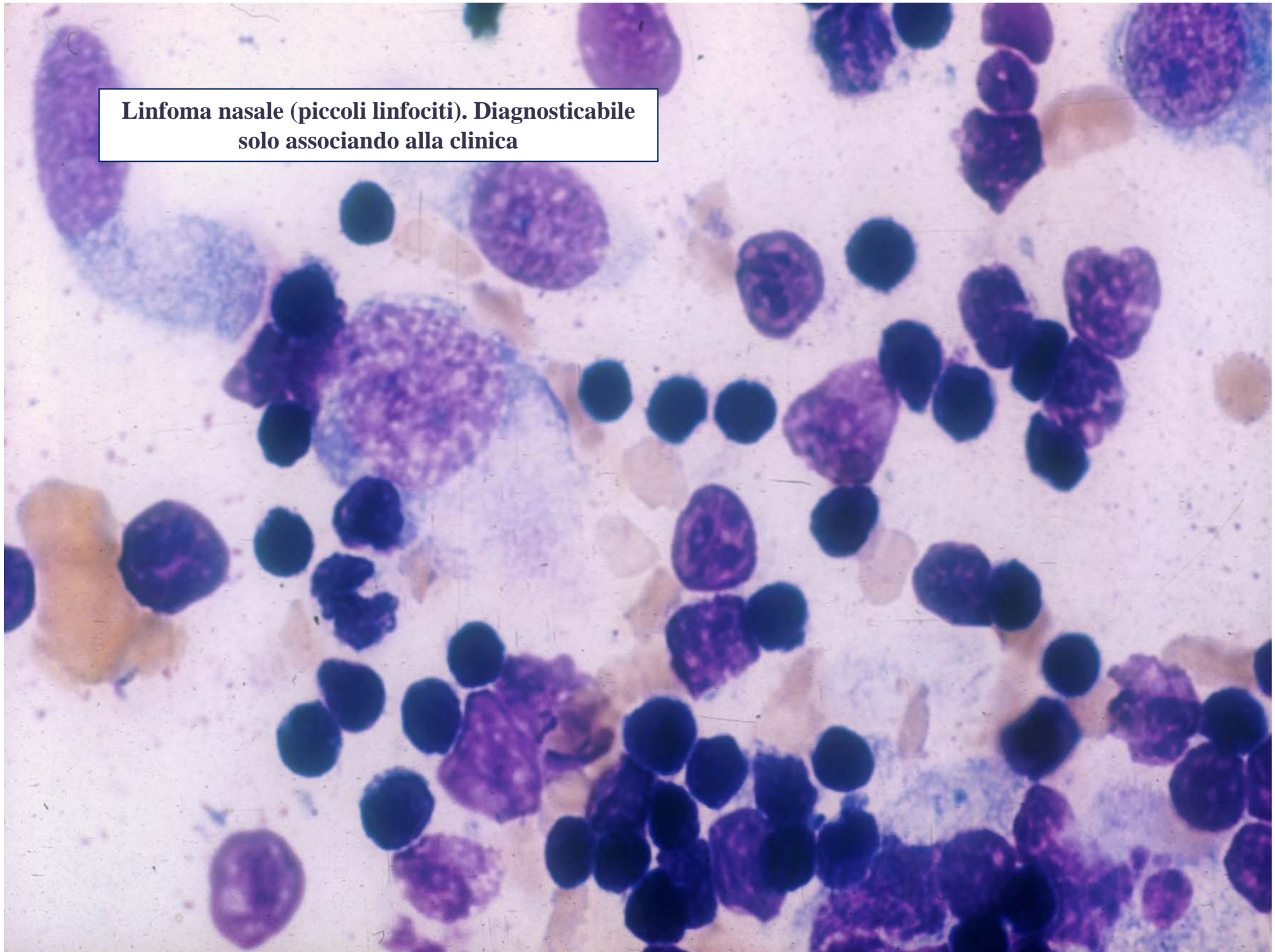
**Flogosi purulenta settica**



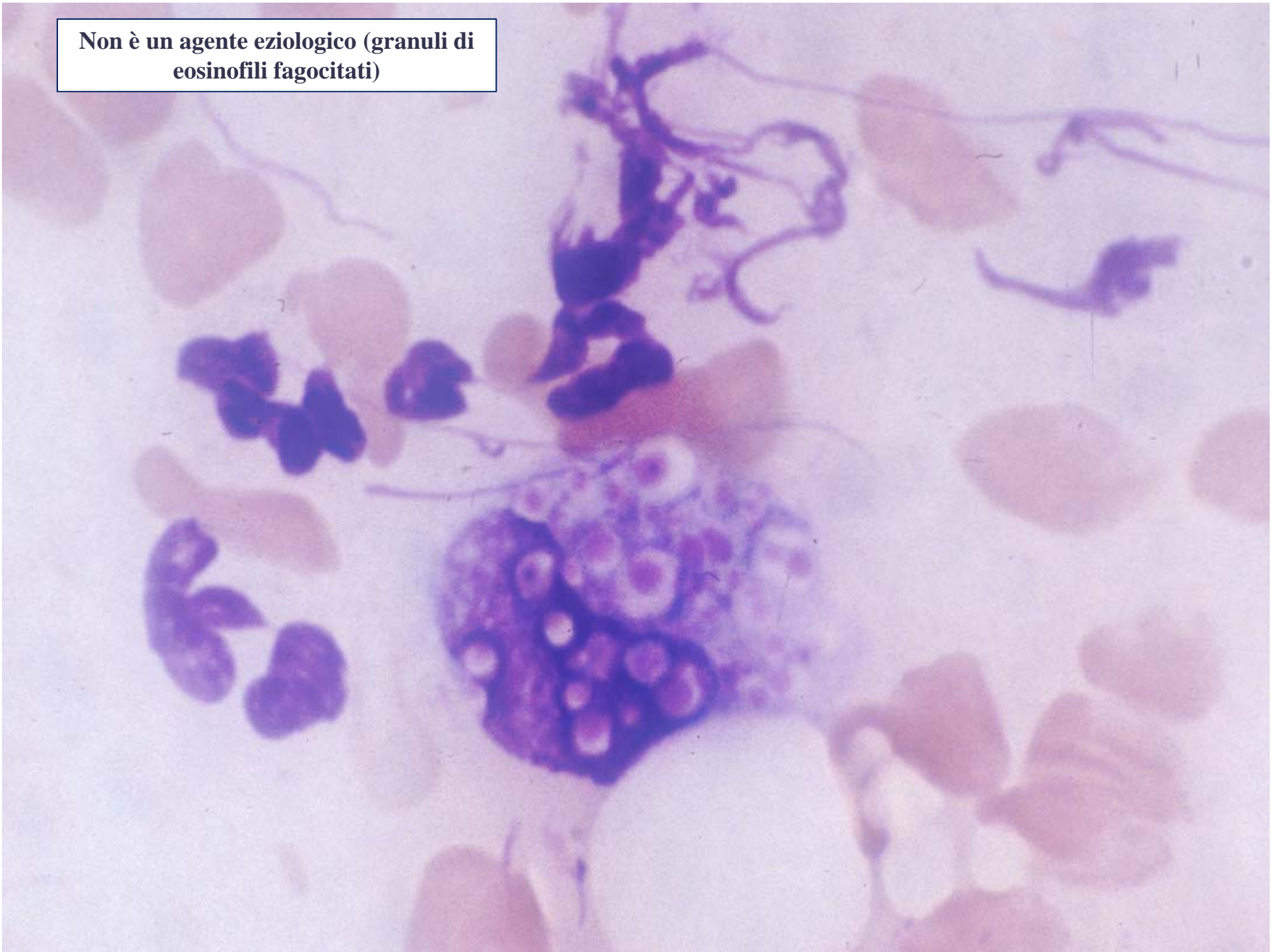
**Clostridiosi**



**Linfoma nasale (piccoli linfociti). Diagnosticabile solo associando alla clinica**

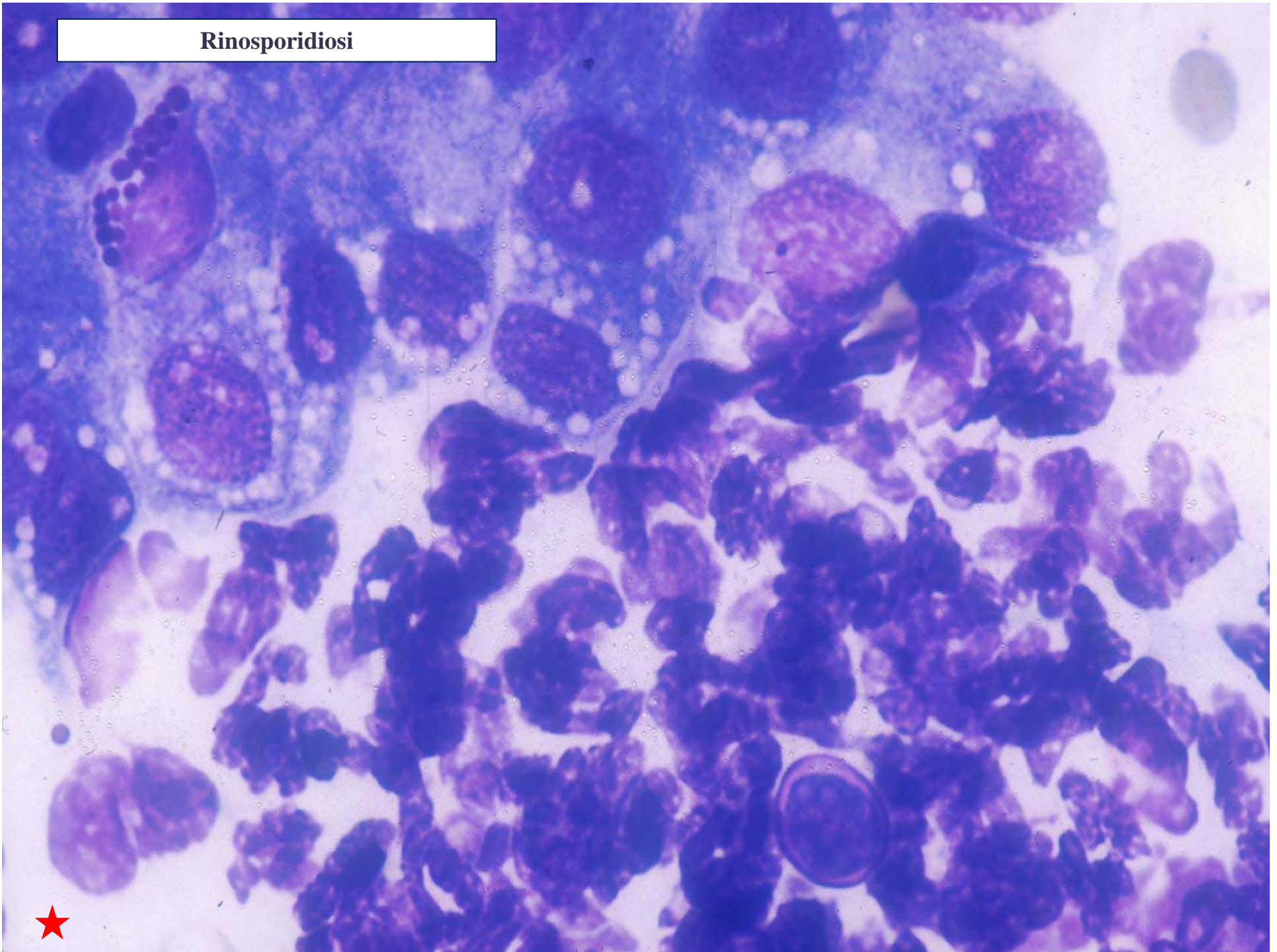


**Non è un agente eziologico (granuli di eosinofili fagocitati)**

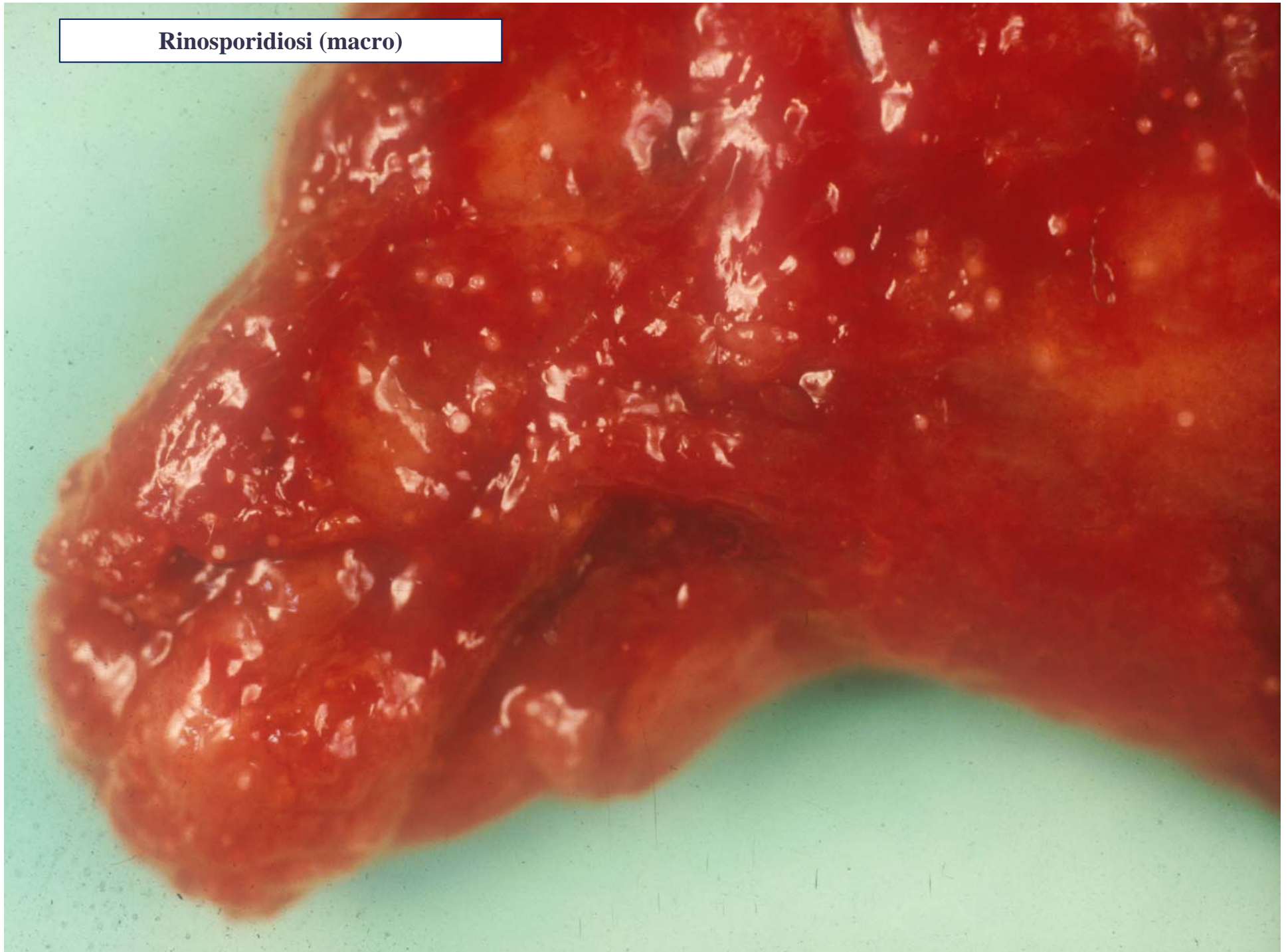




## Rinosporidiosi



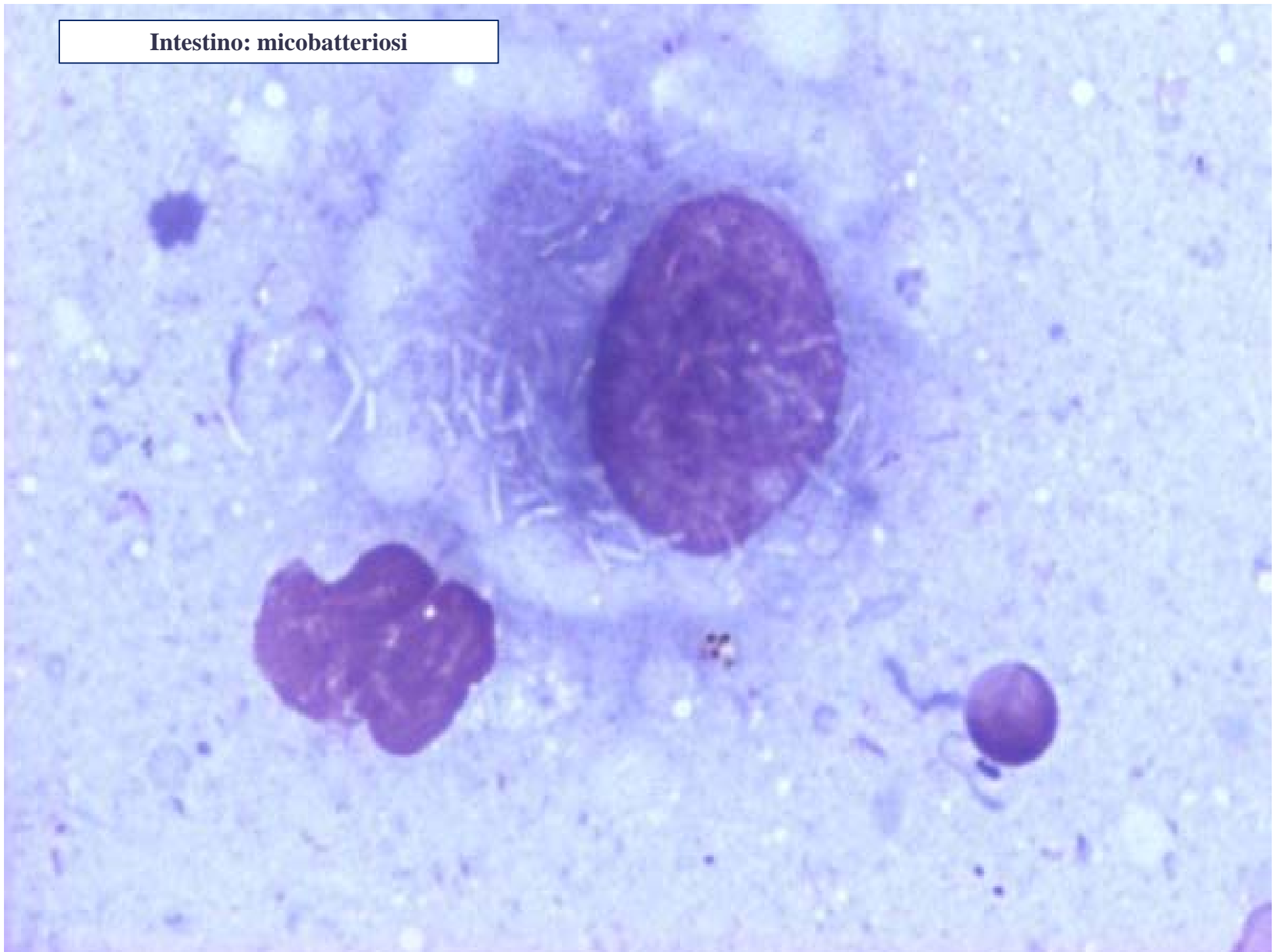
**Rinosporidiosi (macro)**



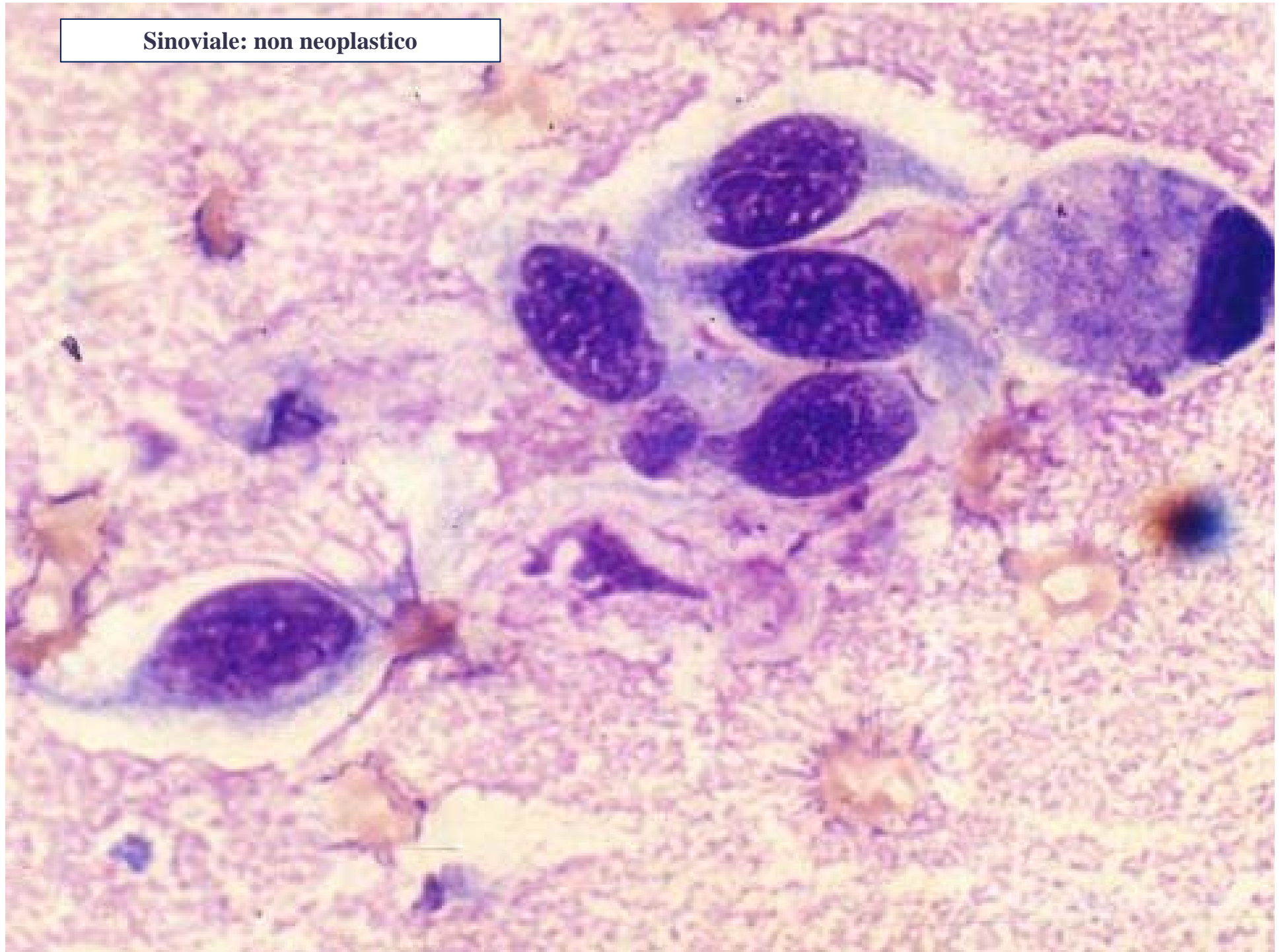
**Linfonodo: negativo per metastasi di mastocitoma**



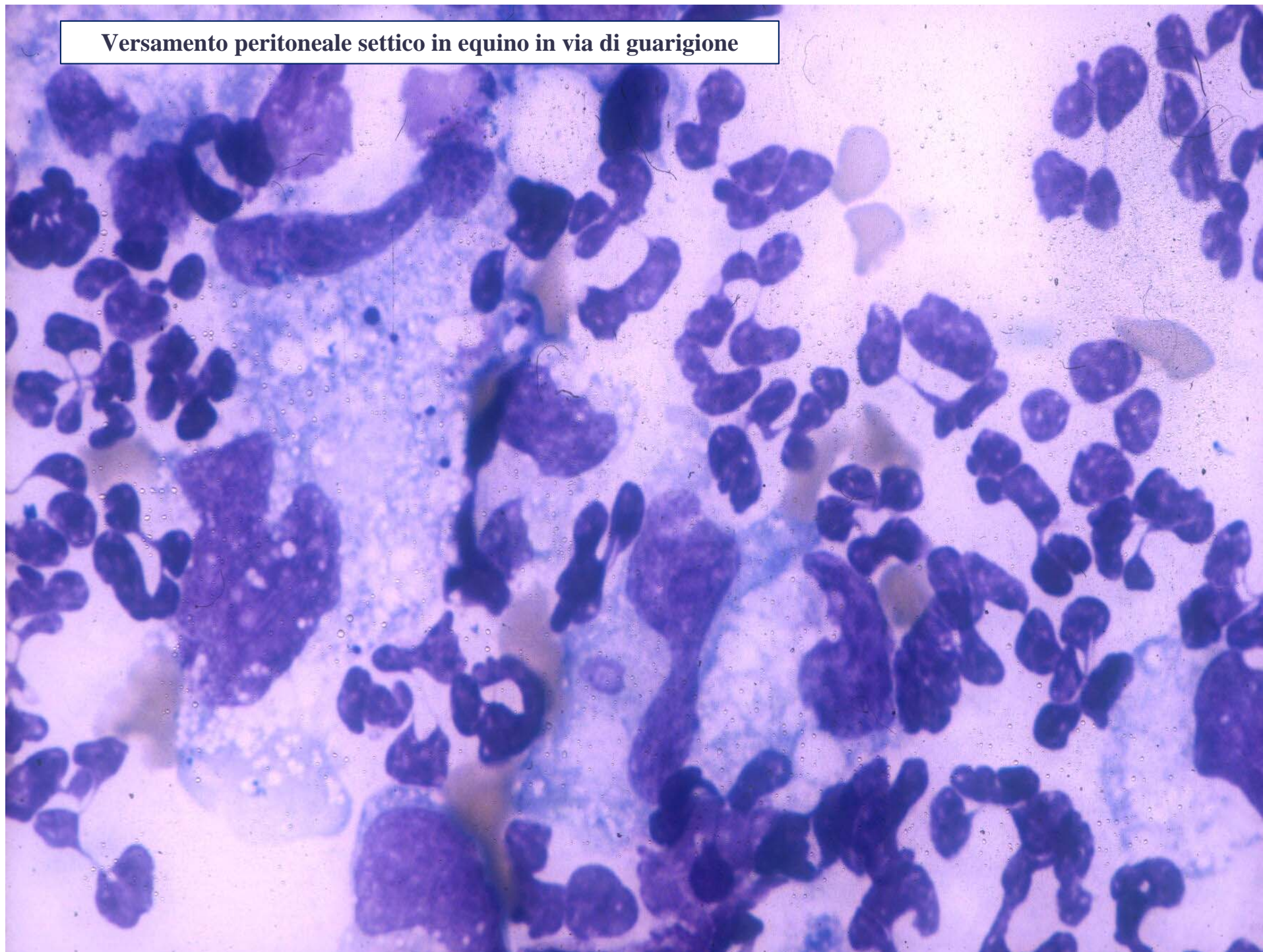
**Intestino: micobatteriosi**



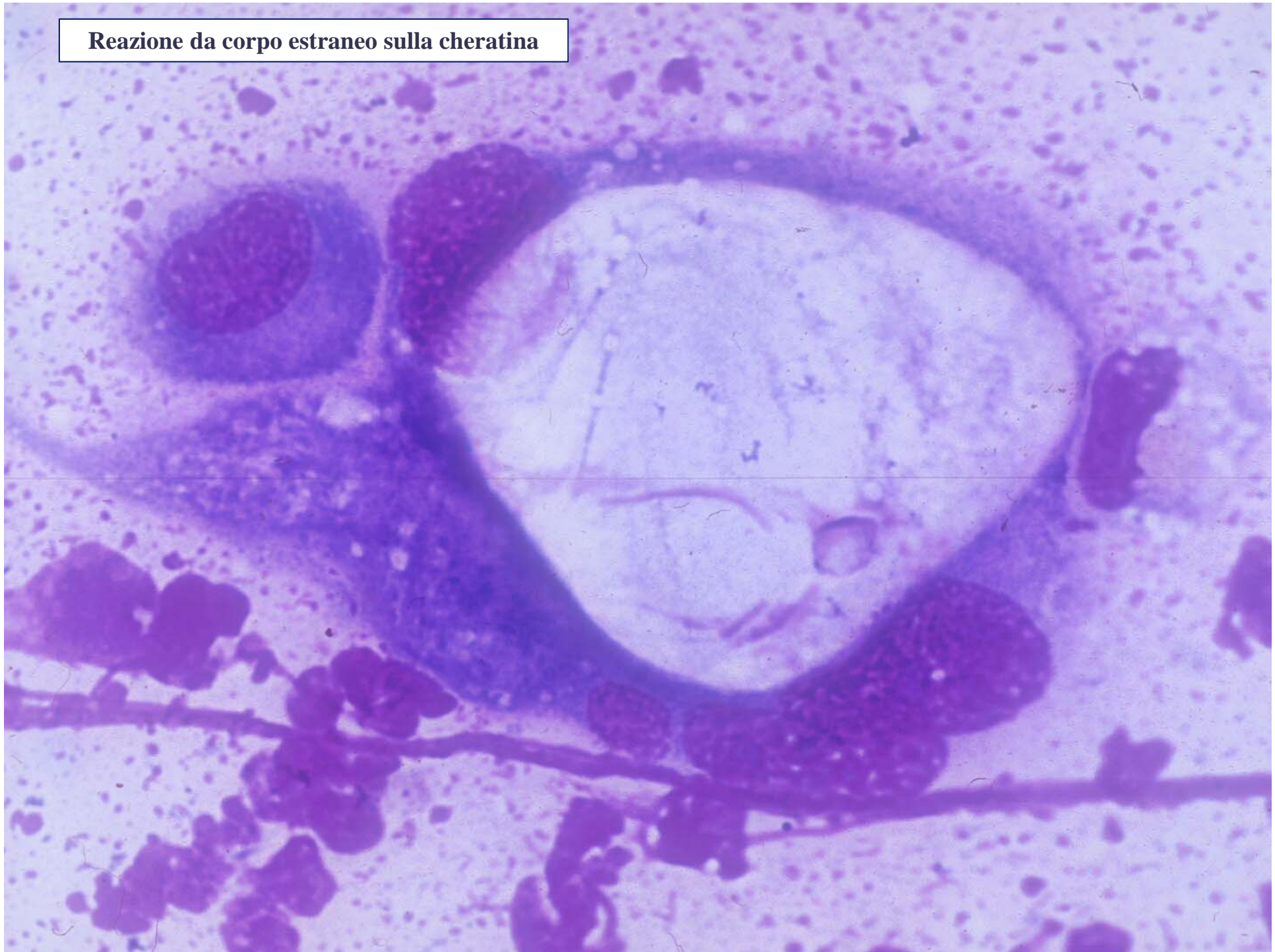
**Sinoviale: non neoplastico**



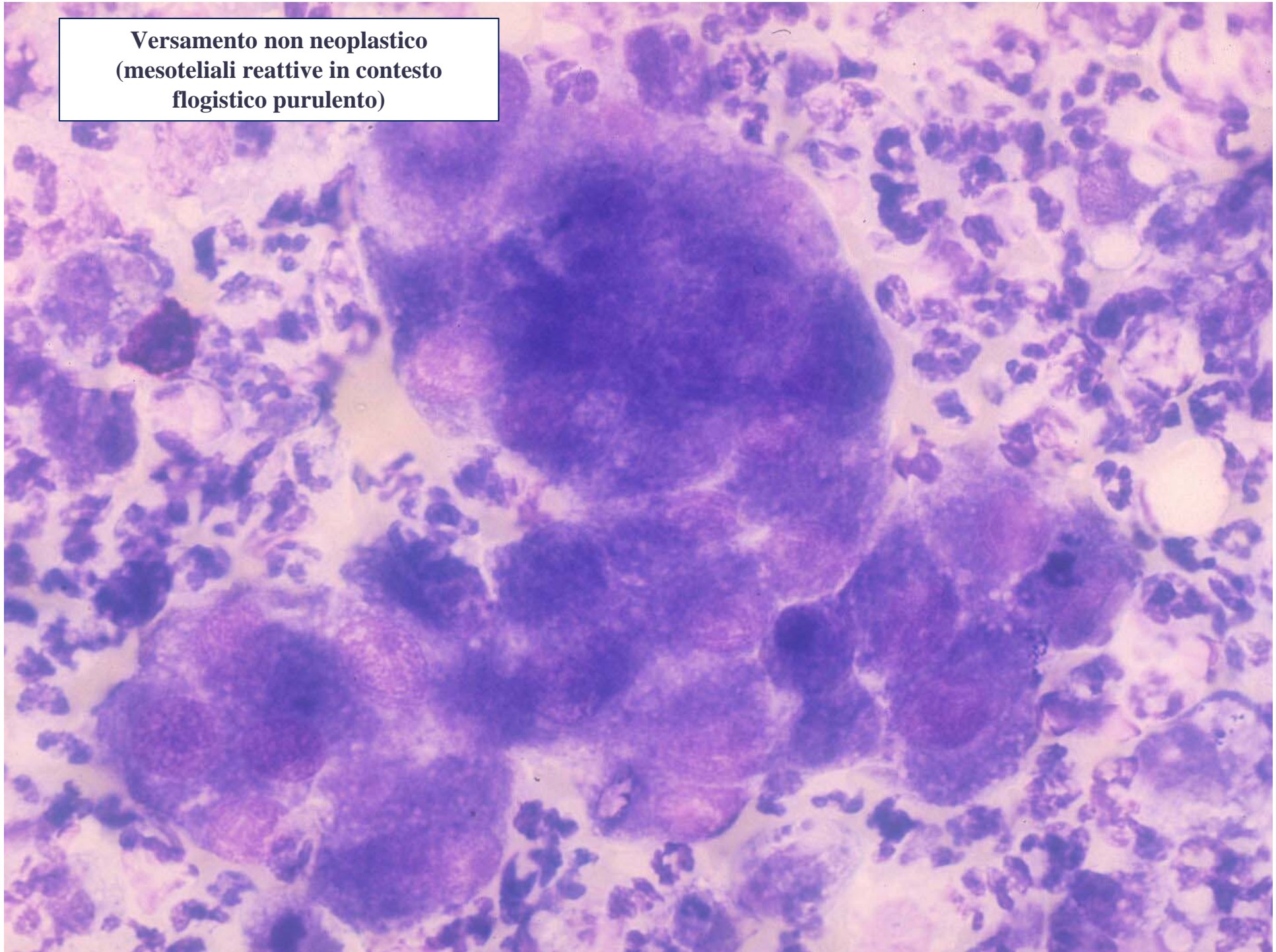
**Versamento peritoneale settico in equino in via di guarigione**



**Reazione da corpo estraneo sulla cheratina**

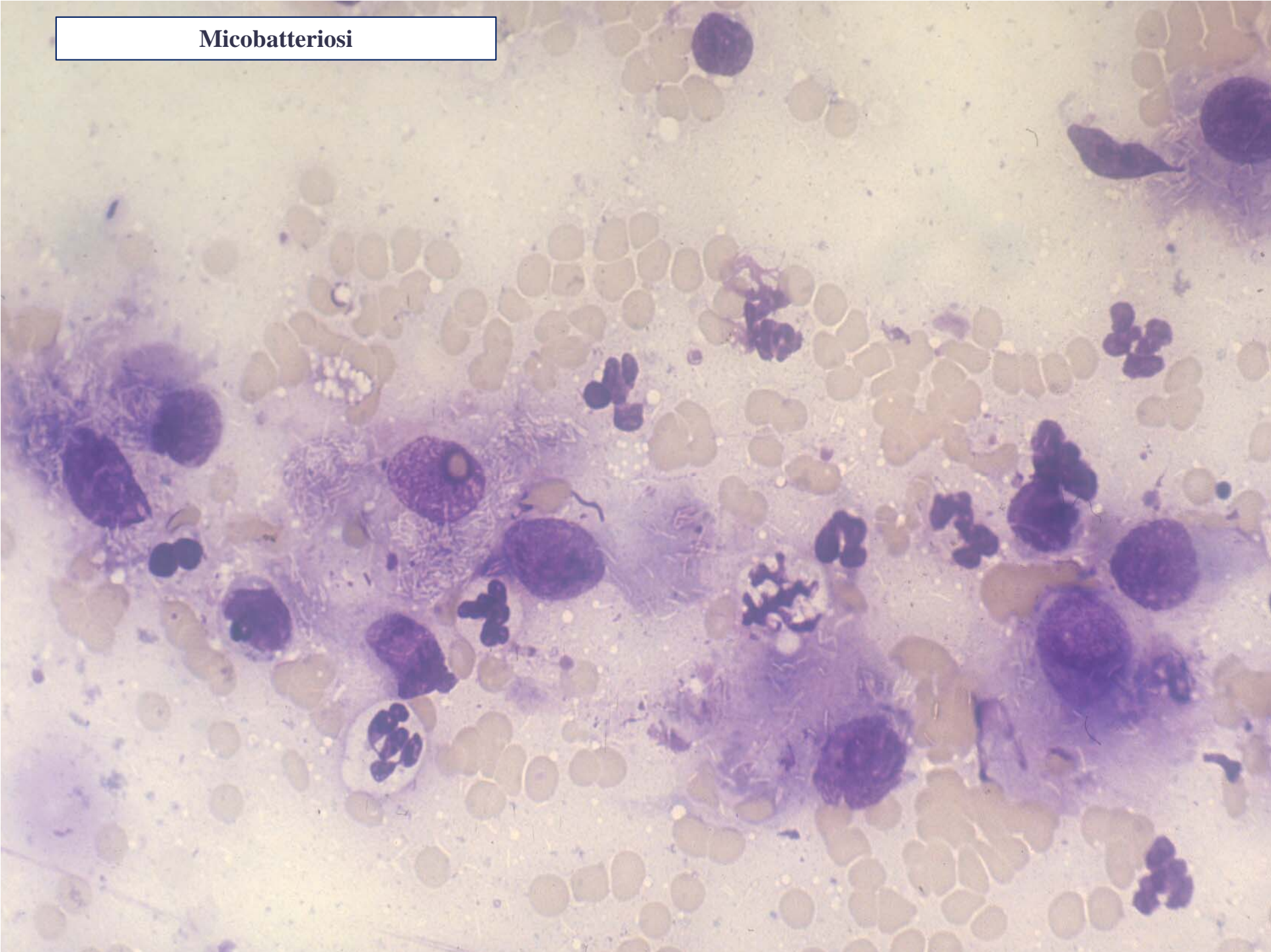


**Versamento non neoplastico  
(mesoteliali reattive in contesto  
flogistico purulento)**

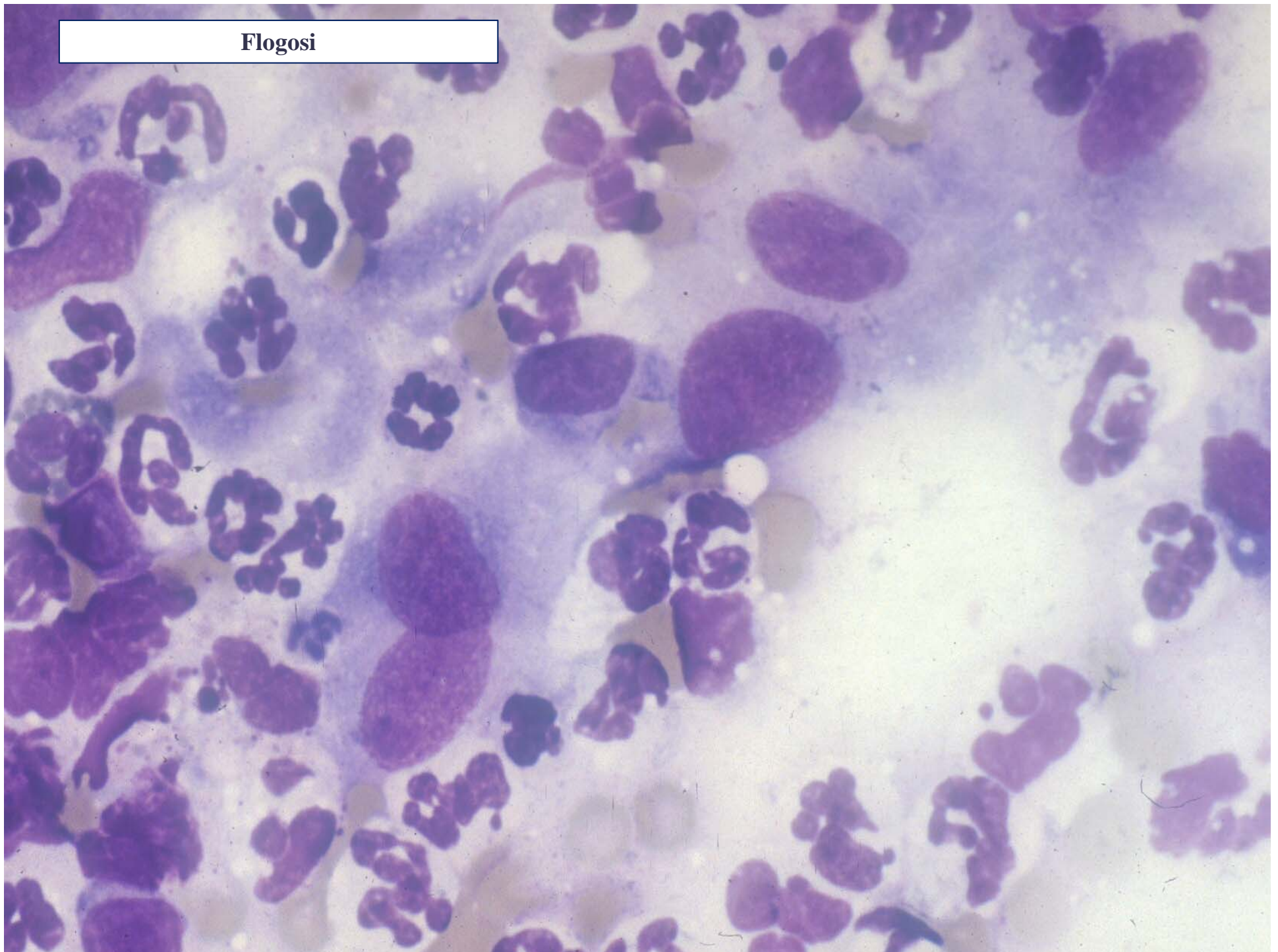




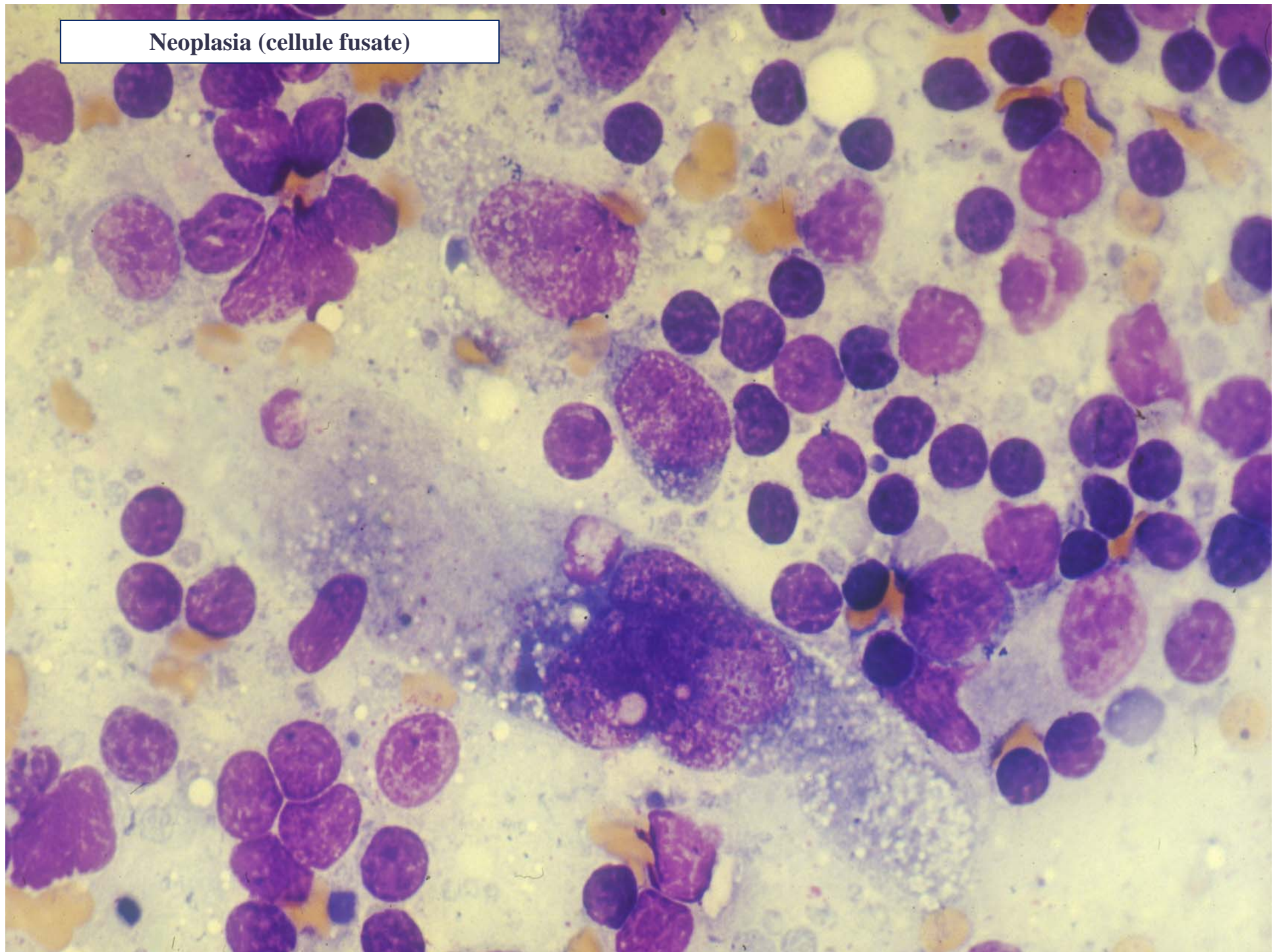
Micobatteriosi



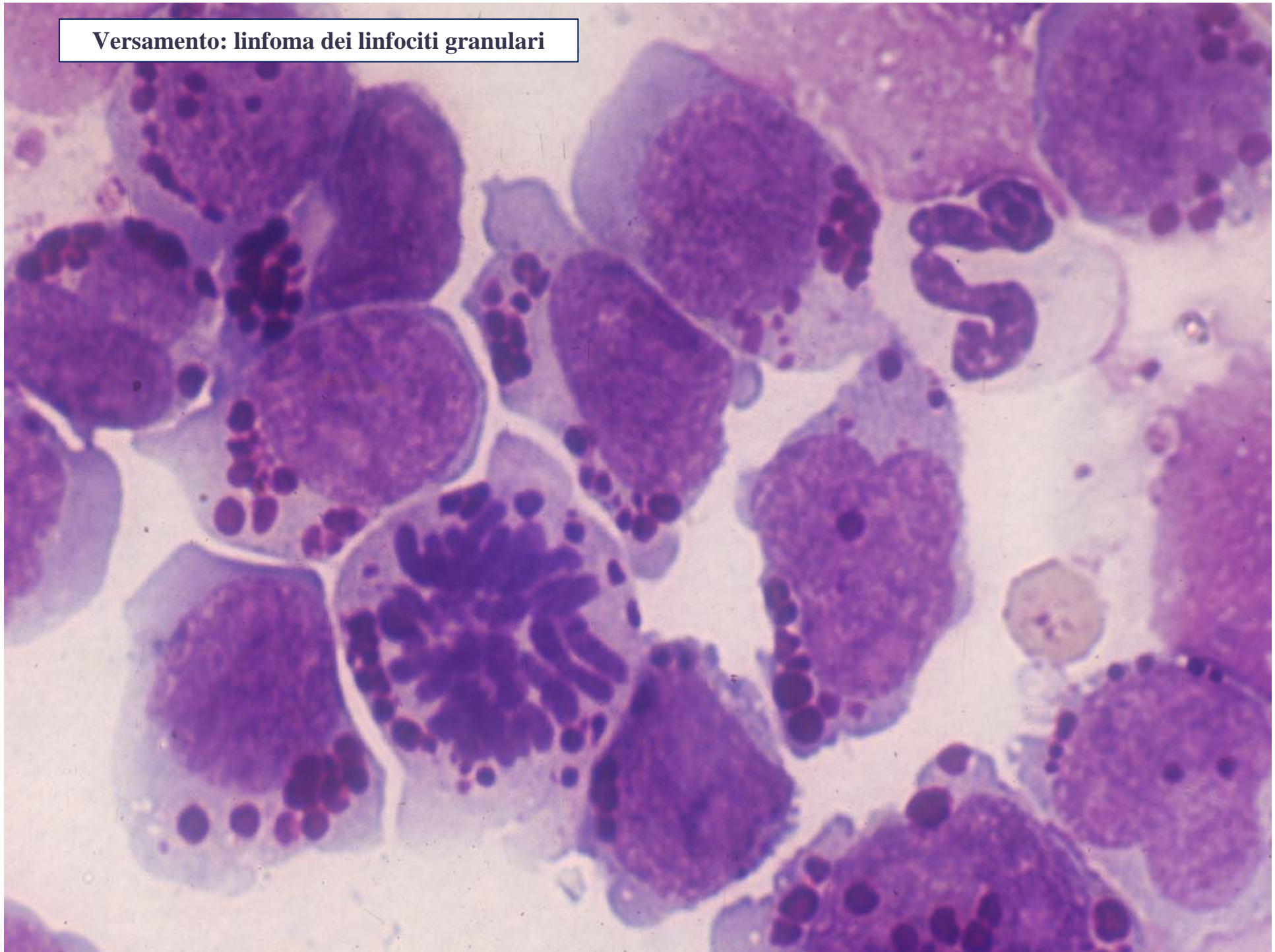
**Flogosi**



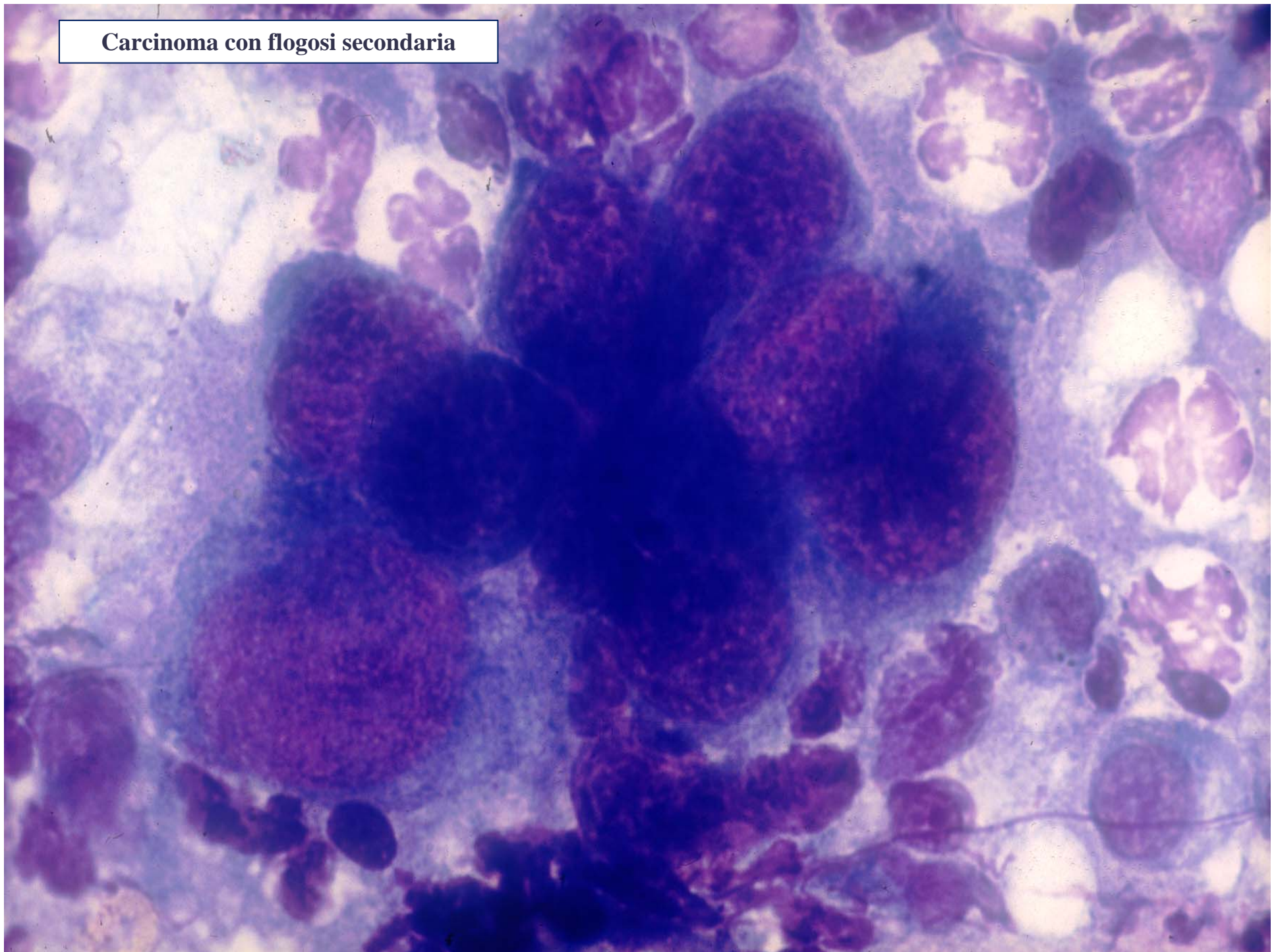
Neoplasia (cellule fusate)



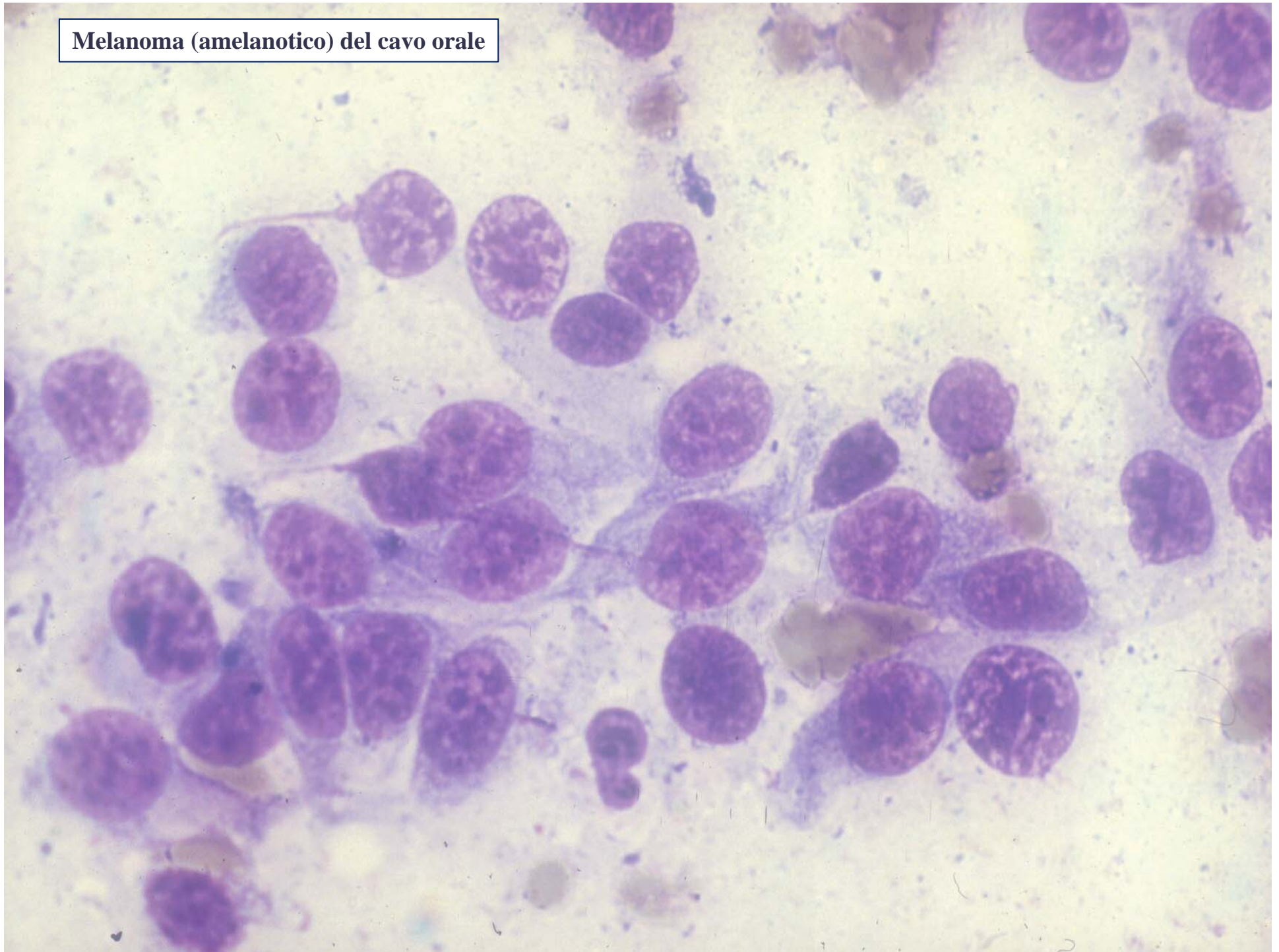
Versamento: linfoma dei linfociti granulari



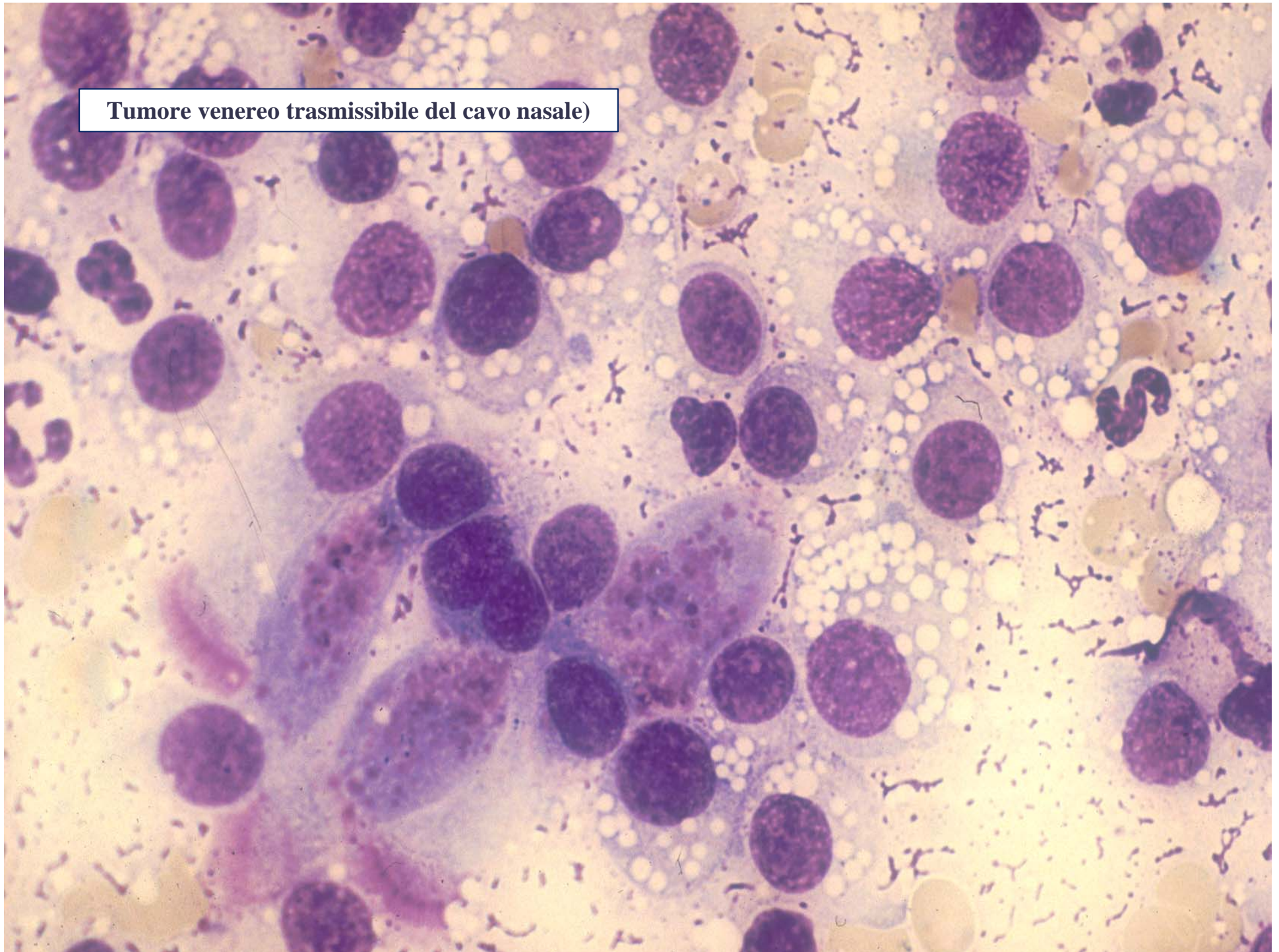
**Carcinoma con flogosi secondaria**



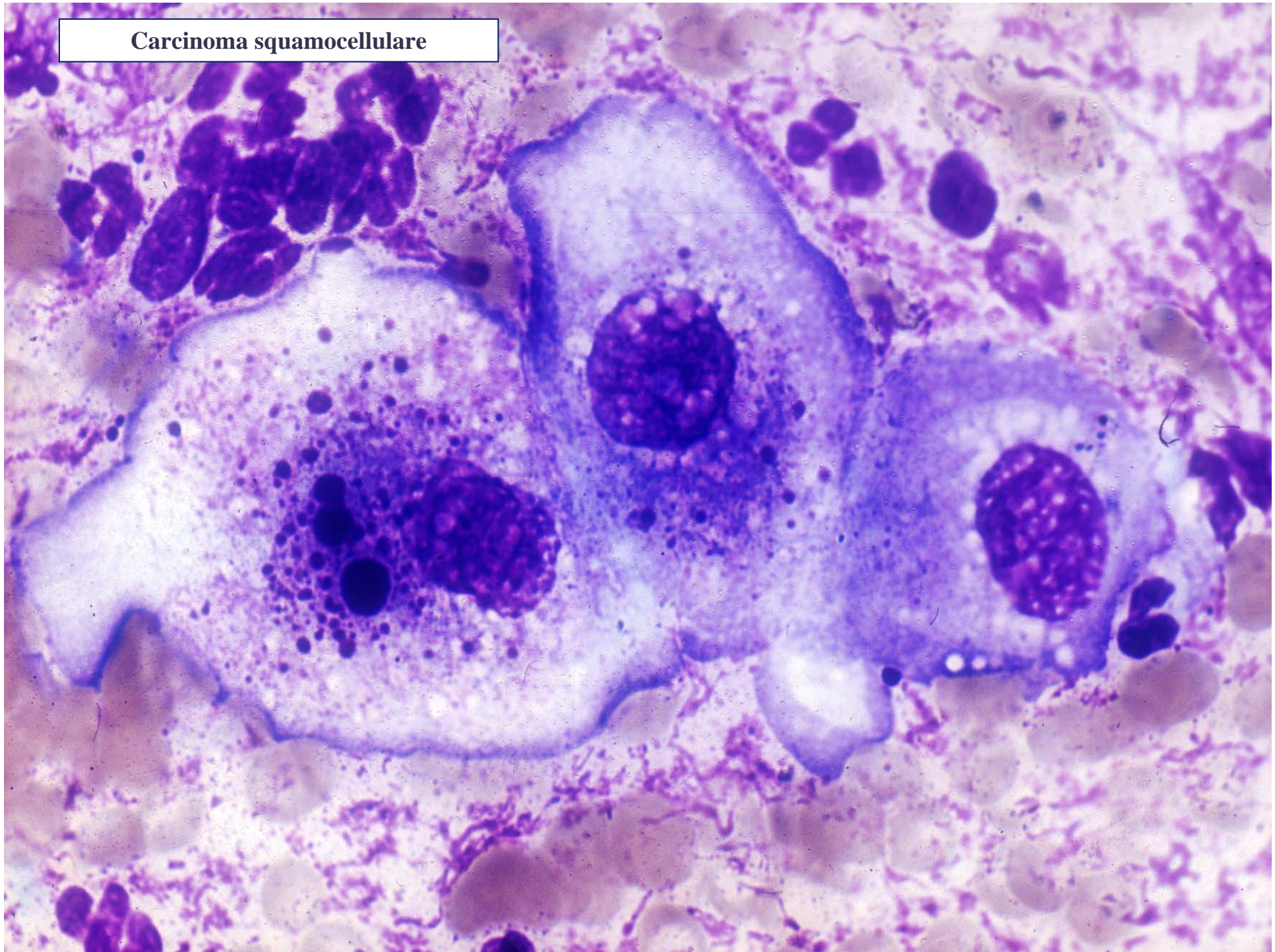
Melanoma (amelanotico) del cavo orale



**Tumore venereo trasmissibile del cavo nasale)**

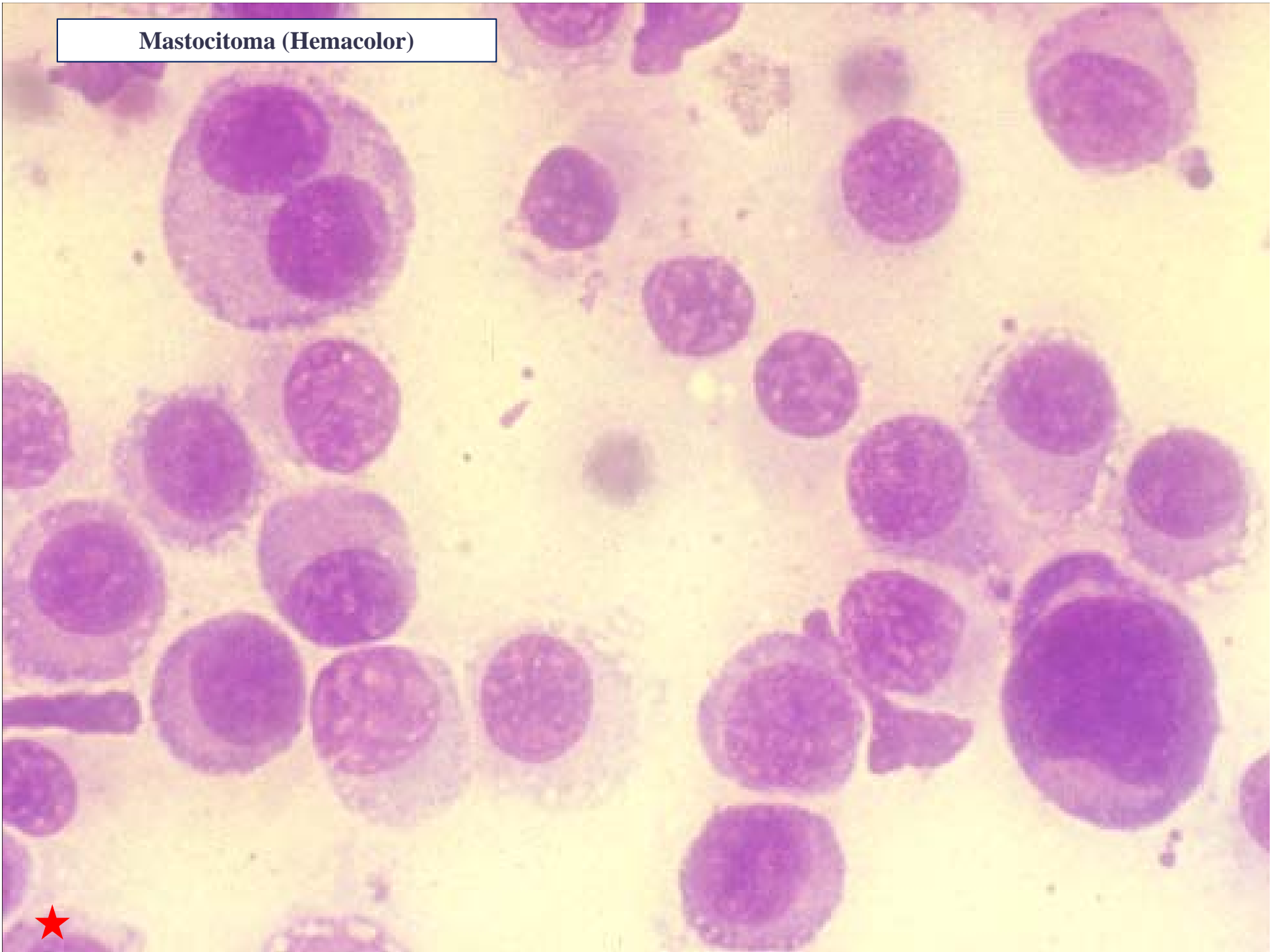


**Carcinoma squamocellulare**

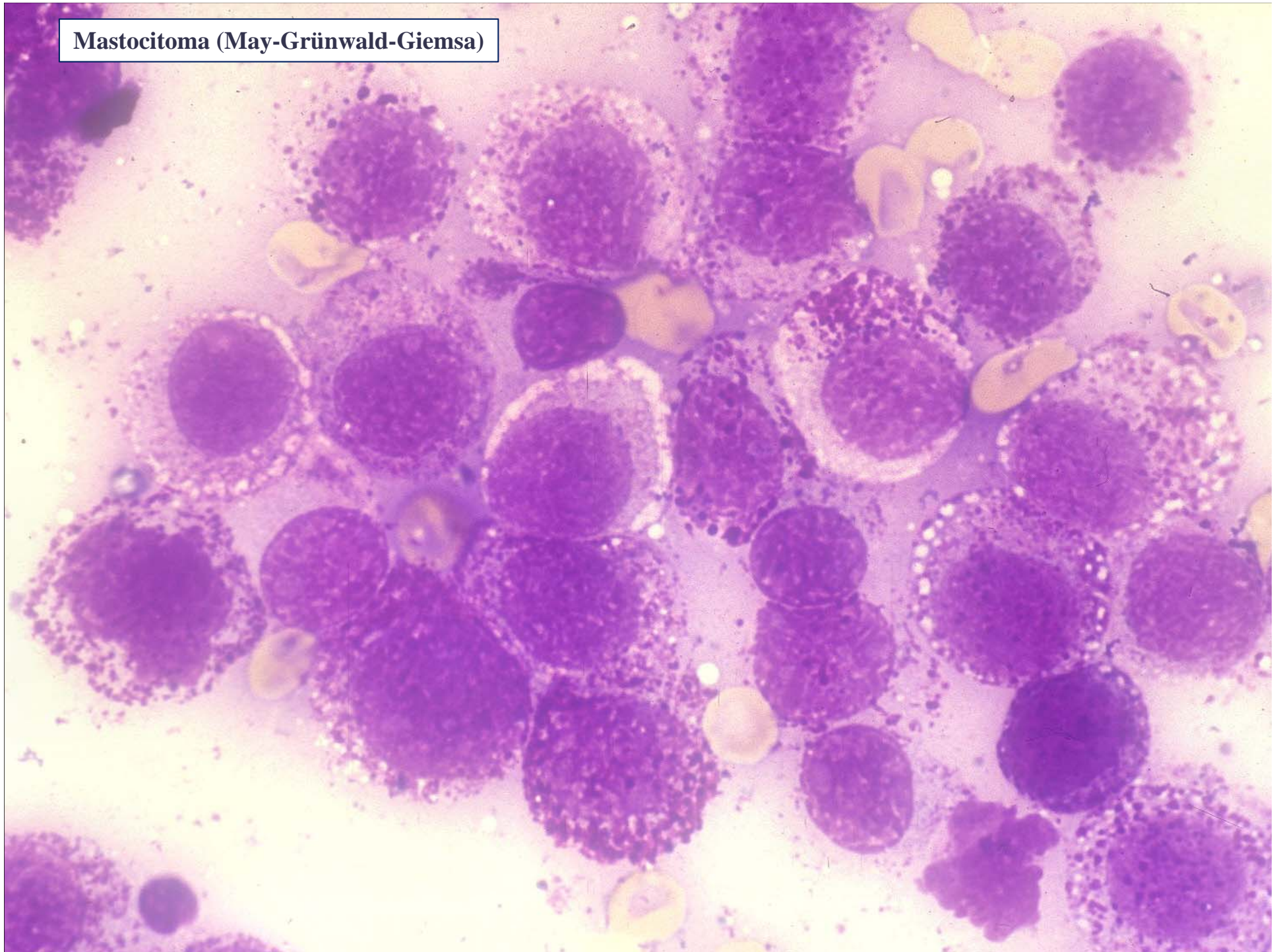




**Mastocytoma (Hemacolor)**



Mastocytoma (May-Grünwald-Giemsa)



**Tumore epiteliale pigmentato**

